



**BIG EASY**  
*Living*

COLUMBUS, TX

RANCH LIVING WITHOUT THE HEAVY LIFTING





THIS IS LUXURY GATED LIVING, RANCH-STYLE.





# **BIG EASY RANCH**

IS A PLACE LIKE NO OTHER.

Where world-class service and style meet rustic charm:

*Welcome to Big Easy Ranch.*

We blend exceptional sporting amenities, championship golf, stunning natural beauty and an ideal location that's just far enough away from the hectic pace of city life.

And, what has been hailed as *A Sporting Club Like No Other* is now offering the opportunity for you to create *A Home Like No Other...*

## **NOW INTRODUCING:**

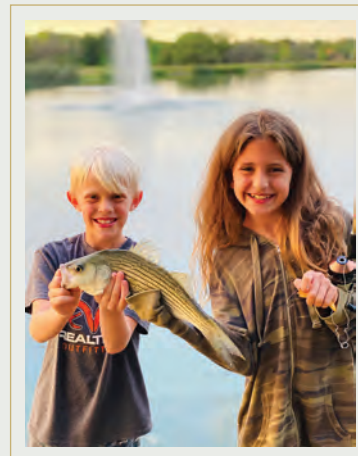
PREMIUM ESTATE HOMESITES & SHARED OWNERSHIP VILLAS,  
PRICING FROM \$825,000. *More on P. 4*



# BIG EASY LIVING

WITHOUT THE HEAVY LIFTING.

SET ON 2,000 ROLLING ACRES between Houston, Austin and San Antonio, Big Easy Ranch is a premier destination for those who seek an active, outdoor lifestyle and sporting activities among stunning natural beauty. Known as one of the area's best kept secrets for hunting, fishing, golf, and the great outdoors, Big Easy Ranch is a luxury retreat with the highest level of service, from professional hunting guides and golf instructors, to our innovative culinary team.



## ENJOY BEING CLOSE TO EVERYTHING:

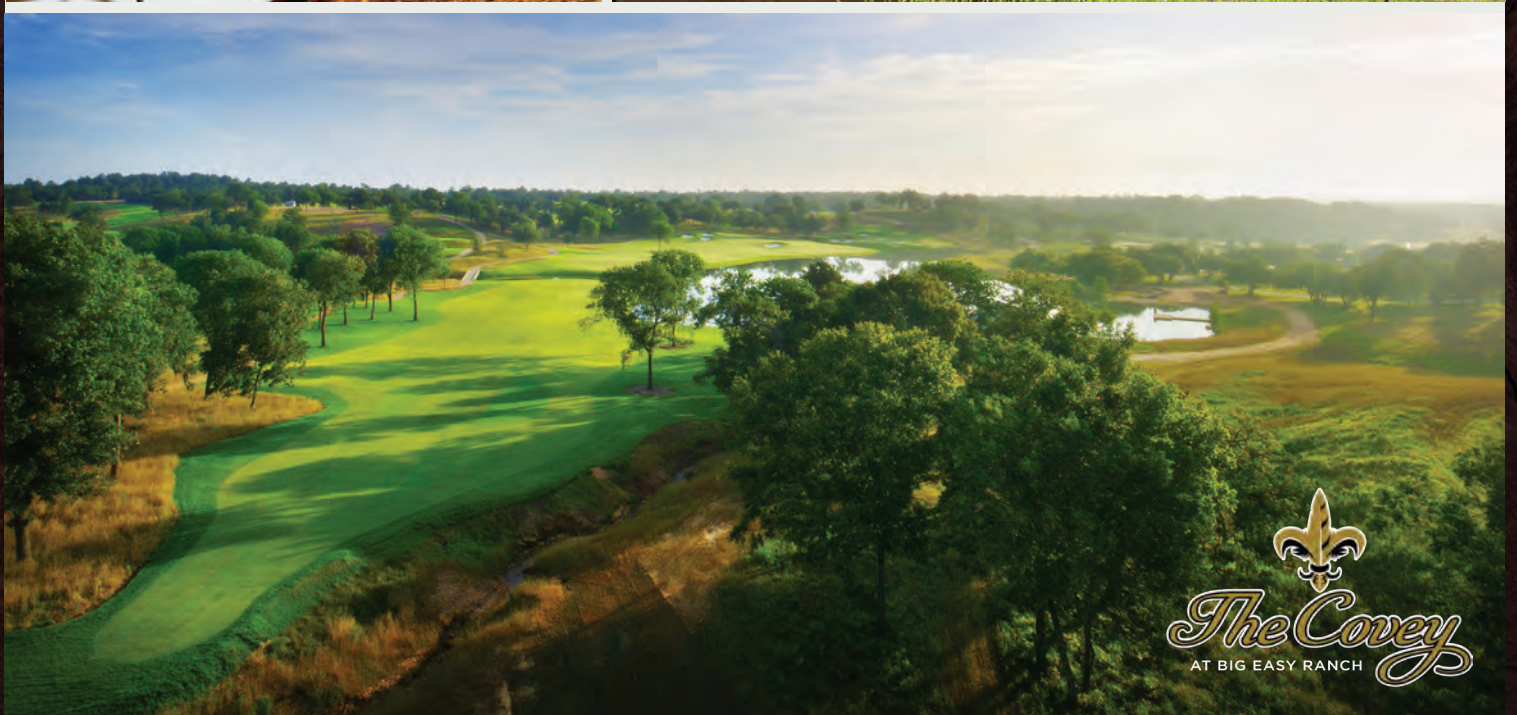
- 1 AUSTIN .....1.5 HR
- 2 HOUSTON.....1 HR
- 3 SAN ANTONIO...2 HR
- 4 VICTORIA.....2 HR
- 5 DALLAS.....4 HR



BIG EASY RANCH IS CENTRALLY LOCATED IN COLUMBUS, TEXAS.

IT IS OUR PASSION to create life-enhancing experiences for members and guests, whether visiting for recreation or creating the family retreat of your dreams. *Simply arrive at Big Easy Ranch and we'll take care of the rest.*







TAKE ADVANTAGE OF NEW REAL ESTATE OPPORTUNITIES &



# LIVE AT BIG EASY RANCH

1

## SPACIOUS SHARED OWNERSHIP VILLAS:

- *Fully Furnished Homes*  
~ 3,795 Square Feet of Living Space  
and Over 5,000 Square Feet of Covered Area
- *Shared Ownership: Purchase a 1/8 interest at \$450,000*
- *Enjoy 42 nights a year*
- *Legacy Membership Required\**

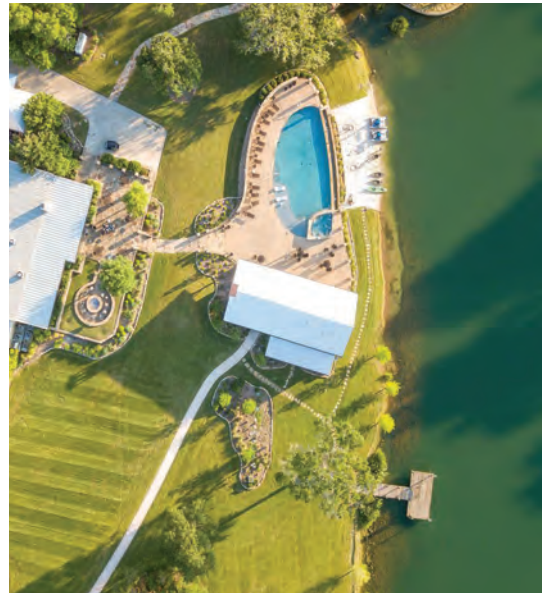
SHARED OWNERSHIP VILLAS, *More on P. 6*

2

## TREE COVERED, BEAUTIFUL ESTATE HOMESITES:

- *Homesite Size: 3/4 Acre to 1+ Acres*
- *Select from Four Featured Homebuilders to Design your Perfect Home*  
~ *Minimum Square Footage Required: 3,000 sf.*  
~ *Build Time: 12-18 Months to Completion*
- *Homesite Pricing Starting at \$825,000.*

ESTATE HOMESITES, *More on P. 16*



THE BENEFITS  
OF SHARED &  
ESTATE OWNERSHIP  
extend far beyond your  
*(amazing)* front door.

- LUXURY RANCH AMENITIES
- EXCLUSIVE MEMBERSHIP PRIVILEGES

*More on P. 34*









## SHARED OWNERSHIP VILLAS, A RETREAT FROM THE EVERYDAY

The Villas at Big Easy Ranch provide the perfect balance of ranch living on a part time basis. Approximately eight villas with 1/8 share ownership will be fully furnished with the high end decor reflected in today's upscale ranches.

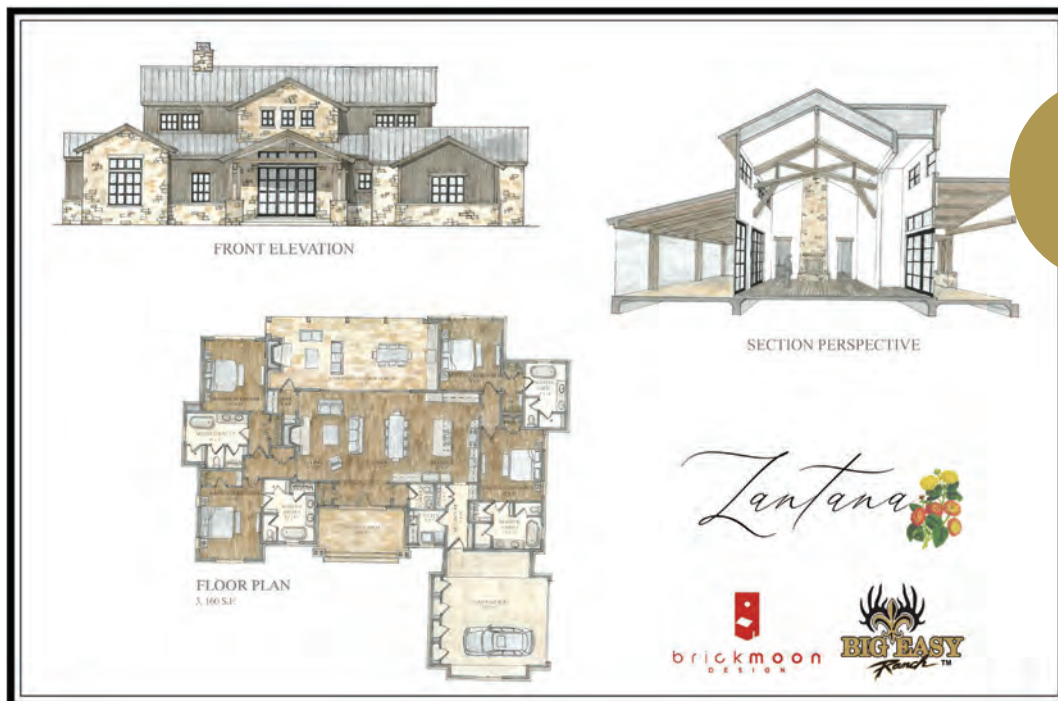
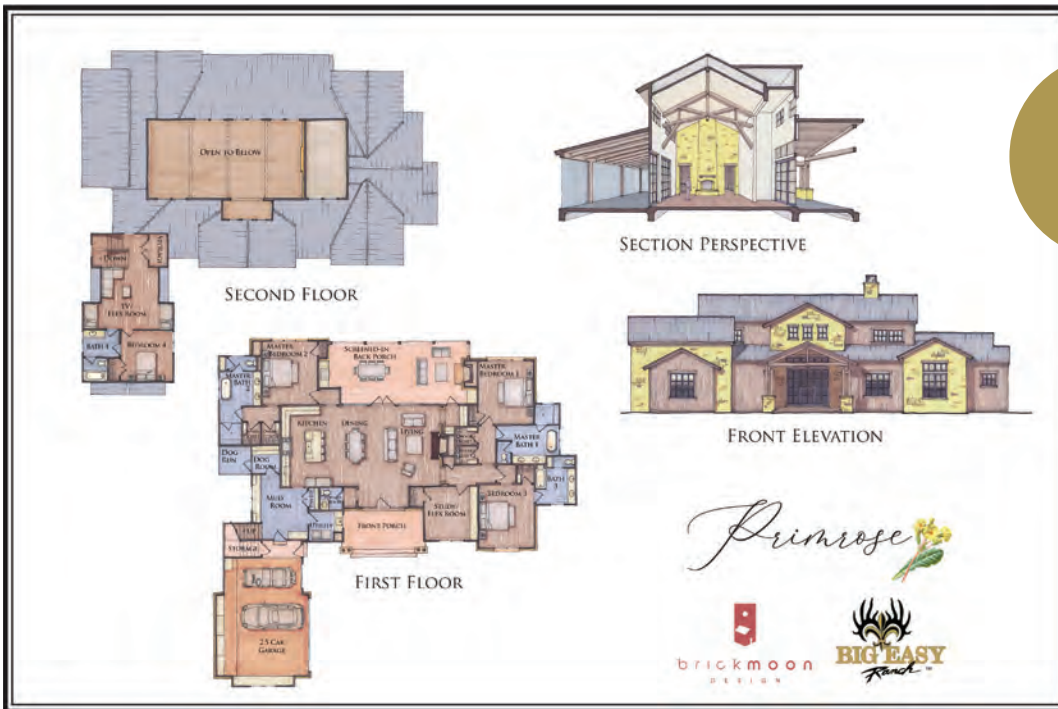
Villa access is offered through a reservation system for approximately 6 1/2 weeks each year with 1/8 ownership and the option to return available dates back to Big Easy Ranch for their member reservations. Villas will not be offered to non-members or third party reservations.

Villa ownership requires a Legacy Membership allowing you to enjoy access to the many sport and recreation, hunting and golf amenities including the new 18-hole championship golf course, The Covey. Legacy Members and their invited guests have access to overnight lodging, whitetail and exotic hunts and wingshooting at the published fees.

### ELEGANT, EXPANSIVE FLOORPLANS

Two floor plans boast 3,795 square feet with two master bedrooms with ensuite baths, guest bedroom, study/flex room, bunk room, four and a half baths and a retractable screened porch. Villas are equipped with private closets for homeowners as well as four seater golf carts.

*Shared Ownership Villas start at \$450,000.*





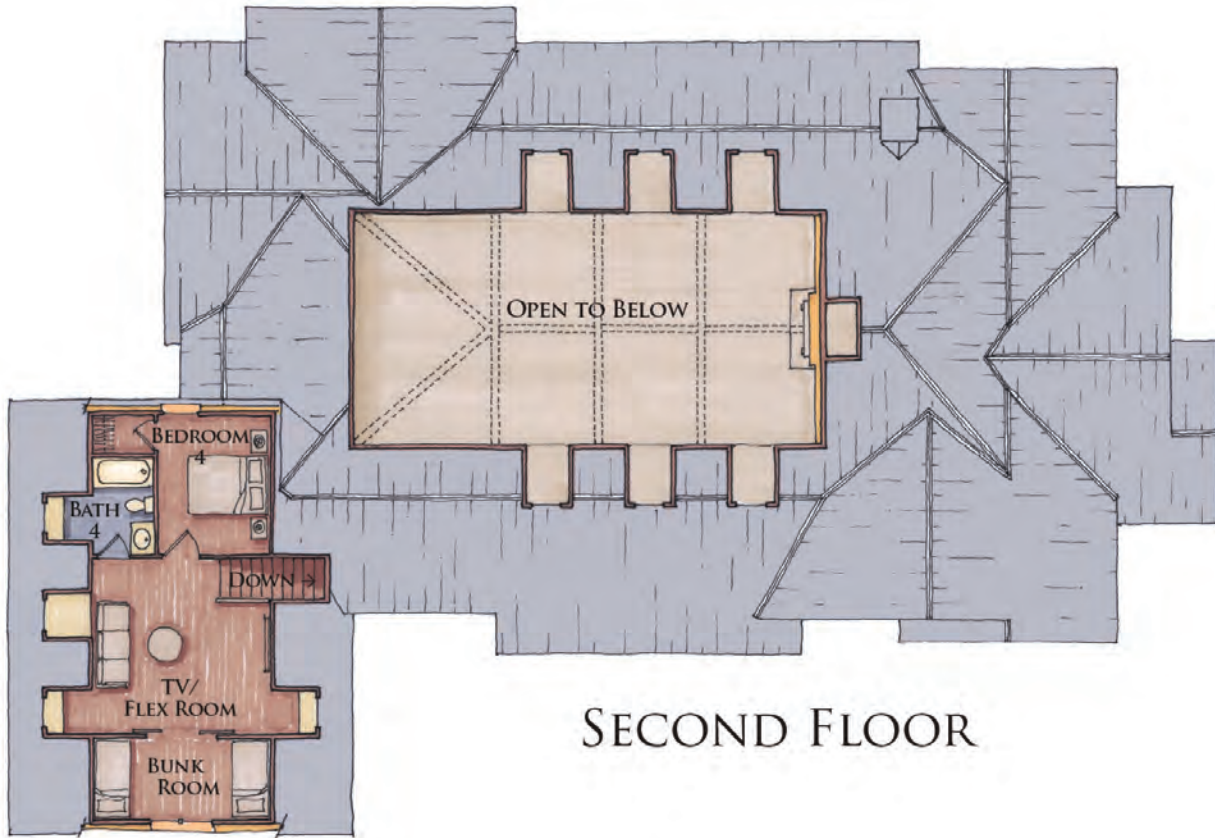
THE *Bluebonnet*  
SHARED OWNERSHIP VILLA



FRONT ELEVATION



SECTION PERSPECTIVE



SECOND FLOOR



FIRST FLOOR

3,795 SF

SHARED OWNERSHIP VILLAS  
BUILDER TEAM



brickmoon  
DESIGN



THE

*Primrose*

SHARED OWNERSHIP VILLA



FRONT ELEVATION







## SECOND FLOOR



## FIRST FLOOR

3,969 SF

SHARED OWNERSHIP VILLAS  
BUILDER TEAM





THE *Lantana*   
SHARED OWNERSHIP VILLA



FRONT ELEVATION



SECTION PERSPECTIVE





FLOOR PLAN  
3,160 SF

SHARED OWNERSHIP VILLAS  
BUILDER TEAM





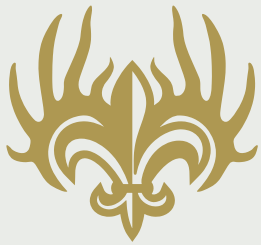
# VILLA INSPIRATION GALLERY











## ESTATE HOMESITES & LUXURY CUSTOM HOMES

Big Easy Ranch is offering approximately 80 estate lots ranging from 2/3 acre to over one acre with four carefully selected **FEATURED HOME BUILDERS** to design and build your dream home. Acreage homesites take full advantage of the diverse and beautiful native terrain and offer varying breathtaking views of lakes, creeks, wooded areas and the 9-hole golf course—the ideal backdrop for a weekend home or primary residence.

Custom homes must meet a minimum of 3,000 square feet and architectural controls as outlined by Brickmoon Design, Architectural Designer, to ensure that the overall aesthetic is maintained.

Home ownership requires a Legacy Membership providing access to the many sport and recreation, hunting and golf amenities including the new 18-hole championship golf course, The Covey. Legacy Members and their invited guests have access to overnight lodging, whitetail and exotic hunts and wingshooting at the published fees.

*Estate Homesites start at \$825,000.*



# FEATURED HOME BUILDERS



  
SEE  
MORE

  
**TEXAS CASUAL COTTAGES**  
By **PARTNERS IN BUILDING**



  
SEE  
MORE

  
**MAY BUILT**  
world class rural living



  
SEE  
MORE

  
**METROPOLITAN**  
CUSTOM HOMES & REMODELING



  
SEE  
MORE

  
**LEITCH PROPERTIES**





**TEXAS CASUAL  
COTTAGES**  
By **PARTNERS IN BUILDING**



FEATURED CUSTOM HOME: PLAN 15900

## TEXAS CASUAL COTTAGES

A custom home is truly unlike any other home. It's unique, like you are. Texas Casual Cottages by PARTNERS IN BUILDING boasts a rich history of building thousands of one-of-a-kind homes since its establishment in 1986. This extensive experience has honed our expertise in one essential aspect—bringing your dream home to life. We recognize that building a custom home isn't about cost per square foot. It's about thought per square foot. There's simply no other builder that can design your custom home, provide a fixed price before start, and begin construction as efficiently as we do.

That kind of custom home experience holds immeasurable value for our customers. It serves as our assurance that you receive the best of both worlds—a personal touch from our dedicated team of local sales counselors, builders, and interior designers, coupled with the financial stability and purchasing power of the #1 Custom Builder in Texas.

[TexasCasualCottages.com](https://www.TexasCasualCottages.com)



## FEATURED HOME:

CUSTOM PLAN  
DESIGN 15900

4,956 SQ. FT.

2-STORY

5 BEDROOMS

4.5 BATHROOMS

3-CAR GARAGE

STUDY | GYM

WINE ROOM | GAME ROOM

COVERED PATIO | LOFT



**TEXAS CASUAL  
COTTAGES**  
By PARTNERS IN BUILDING



VIEW THIS  
FLOORPLAN





## FEATURED CUSTOM HOME:

This luxurious floorplan spans an impressive 4,956 square feet across two levels. It offers ample space with five generously sized bedrooms. The convenience of a three-car garage is complemented by a dedicated study, a well-equipped home gym, and a tastefully designed wine room. Inside, the high vaulted ceilings adorned with exposed wood beams, complemented by elegant chandeliers, create an expansive and inviting ambiance.

The open floor plan seamlessly connects various living spaces, with the kitchen taking center stage as its focal point. Entertainment options abound with a versatile game room and a spacious loft, perfect for a variety of leisure activities. The covered patio extends your living space to the outdoors, providing a serene retreat for relaxation and gatherings. This home offers a perfect blend of style, functionality, and space for a truly exceptional living experience.



### CUSTOM PLAN DESIGN 15900

4,956 SQ. FT.

100'-2" x 79'-½"

2-STORY

5 BEDROOMS | 4.5 BATHROOMS

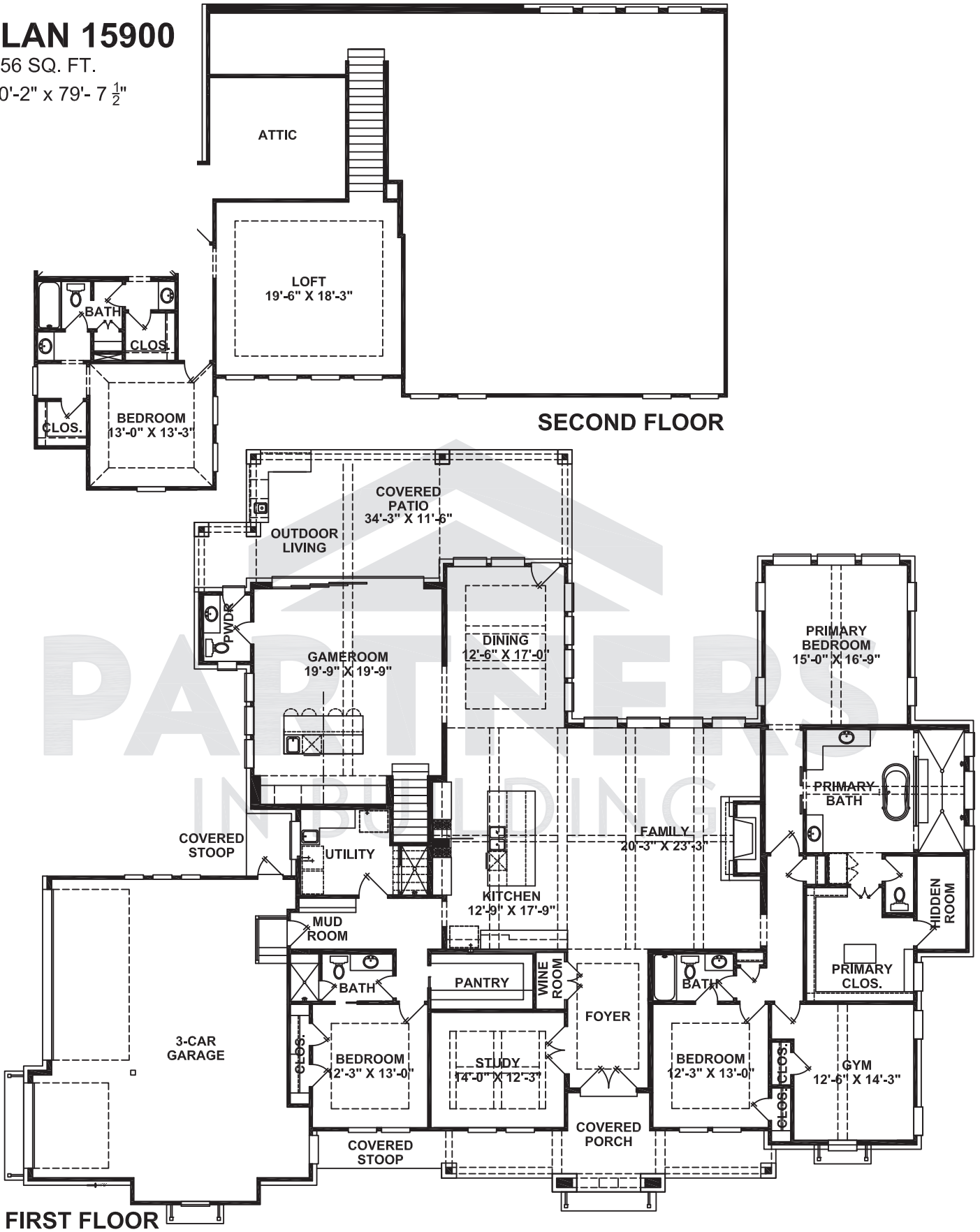
3-CAR GARAGE

STUDY | GYM | WINE ROOM | GAME  
ROOM | COVERED PATIO | LOFT



**PLAN 15900**

4956 SQ. FT.  
100'-2" x 79'-7 1/2"



**FIRST FLOOR**

**SECOND FLOOR**



WINDOW PLACEMENT, ROOF LINE AND PORCHES MAY VARY BY ELEVATION. SQUARE FOOTAGE AND ROOM DIMENSIONS ARE APPROXIMATE. VARIANCES IN SQUARE FOOTAGE MAY OCCUR IN DIFFERENT ELEVATIONS OR WHEN SPECIAL FEATURES ARE SUBJECT TO CHANGE WITHOUT NOTICE. THESE PLANS AND SPECIFICATIONS ARE COPYRIGHTED AND MAY NOT BE USED WITHOUT THE EXPRESS WRITTEN CONSENT OF PARTNERS IN BUILDING, L.P. THIS COPYRIGHT NOTICE AND WARNING IS "COPYRIGHT MANAGEMENT INFORMATION" UNDER THE DIGITAL MILLENNIUM COPYRIGHT ACT, 17 U.S.C. §1202, AND IS UTILIZED TO PREVENT AND POLICE COPYRIGHT INFRINGEMENT. ©PARTNERS IN BUILDING L.P. 2015 DO NOT REMOVE OR MODIFY THIS NOTICE







**MAYBUILT** is a family run design/ build firm owned by Lance and Tina May. With over three decades of custom building experience, we have a huge volume of knowledge and ability to exceed your expectations. We specialize in turn key estate projects from raw land acquisition through final move in and everything in between. We can help you realize your dream home. MayBuilt offers expert pre-purchase consulting, design, engineering, luxury home building, pond/lake building, outbuildings, and fencing just to name a few of our available services.

[Maybuilt.com](http://Maybuilt.com)





## FEATURED HOME:



### CUSTOM HOME 102 LABRADOR LANE | HOMESITE 18

6,361 SQ. FT.  
Interior Living Area

792 SQ. FT.  
Exterior Living Area

4 Bedrooms  
4 Full and 2 Half baths

- Spectacular Overlook  
Views of Lakes and  
Golf Course
- Tons of Glass Filled Rooms

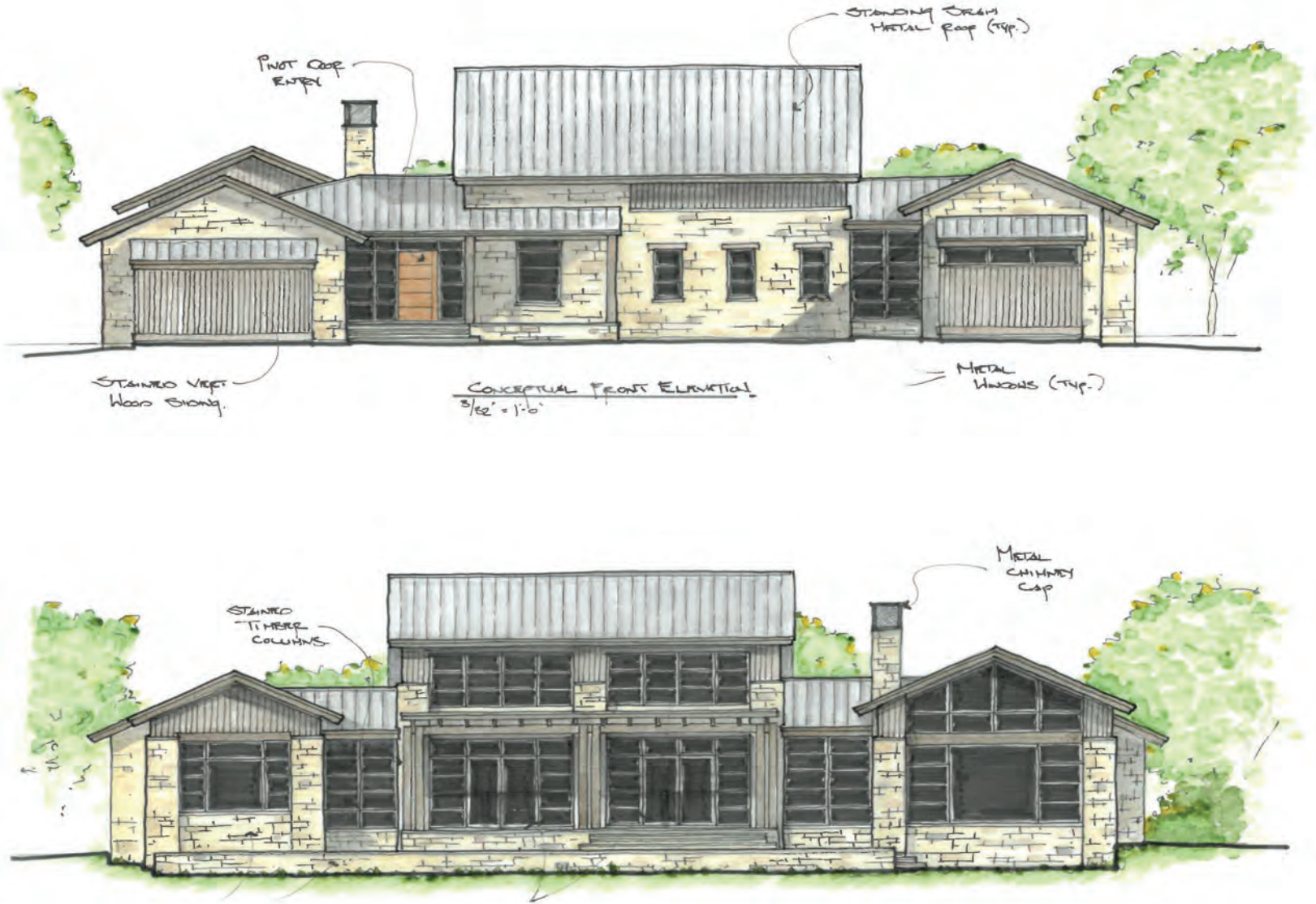
#### FEATURING:

- TWIN MASTER SUITES
- GUEST AREAS
- GOLF CLOSET
- GUN ROOM
- WINE ROOM
- ZOOM ROOM





# CUSTOM HOME: 102 LABRADOR LANE | HOMESITE 18



## CUSTOM HOME: 102 LABRADOR LANE | HOMESITE 18

6,361 SQ. FT. - Interior Living Area | 792 SQ. FT. - Exterior Living Area

4 Bedrooms | 4 Full and 2 Half baths

- Spectacular Overlook Views of Lakes and Golf Course
- Tons of Glass Filled Rooms

TWIN MASTER SUITES  
GUN ROOM

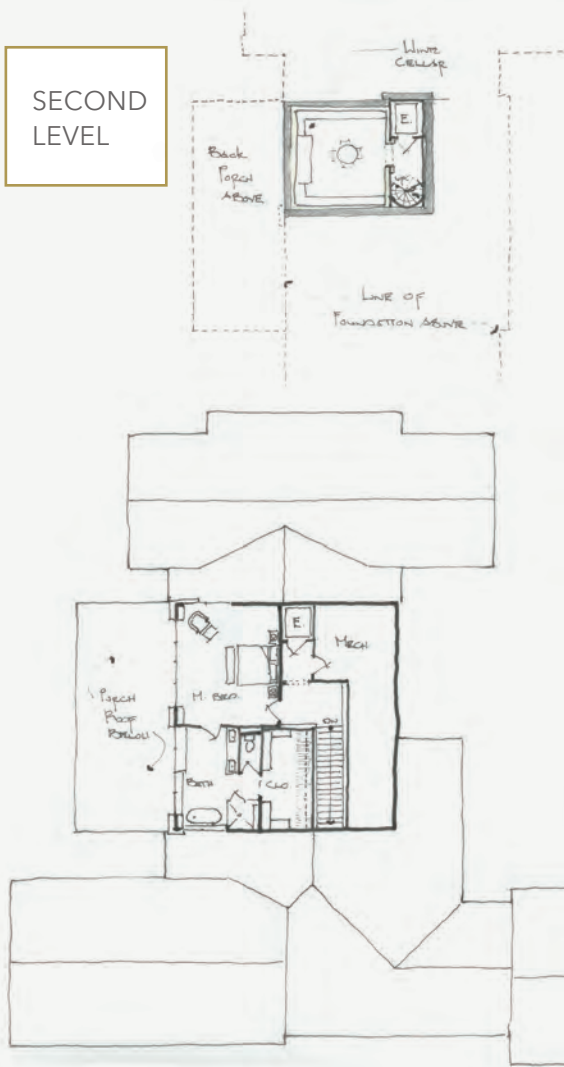
GUEST AREAS  
WINE ROOM

GOLF CLOSET  
ZOOM ROOM



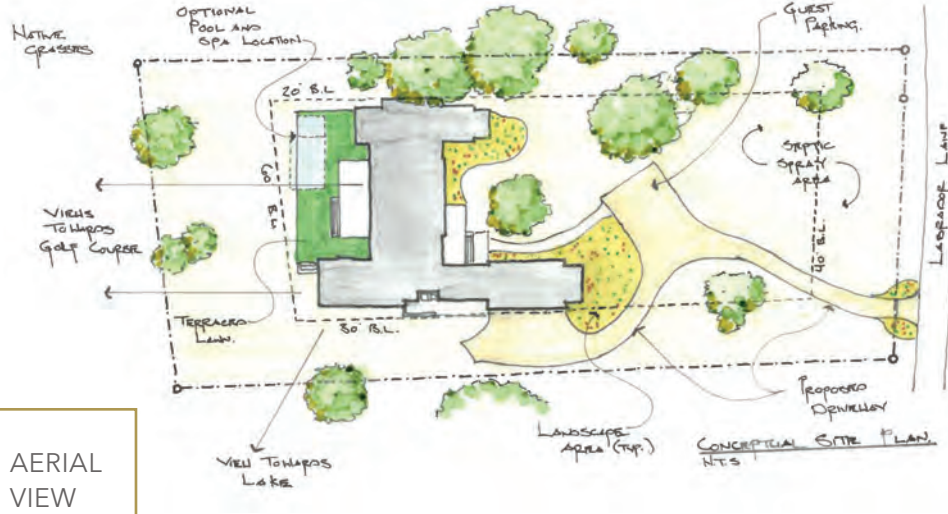


SECOND LEVEL



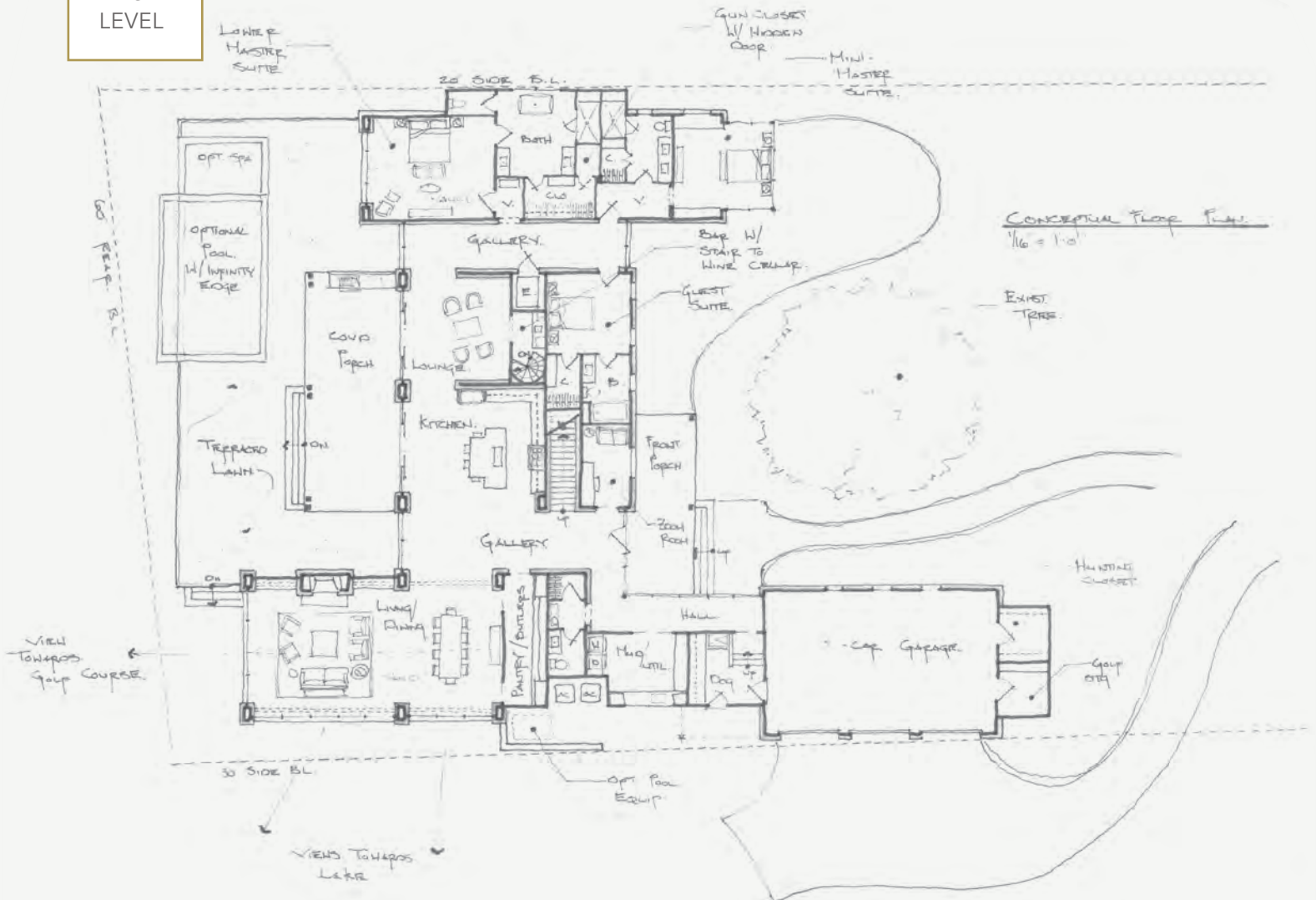
# MAY BUILT

world class rural living



AERIAL VIEW

FIRST LEVEL



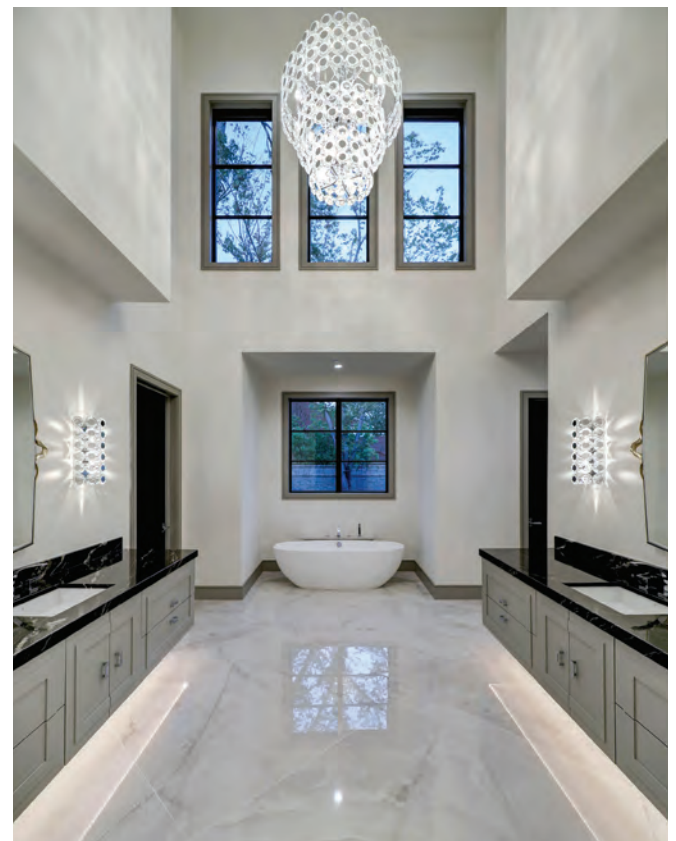




**METROPOLITAN CUSTOM HOMES** sets the standard for excellence in the custom home and remodeling industry. With a personalized approach and top-notch craftsmanship, we consistently translate our clients' needs into the homes of their dreams. Our standards for integrity, quality and professionalism maximize our product value and customer appreciation.

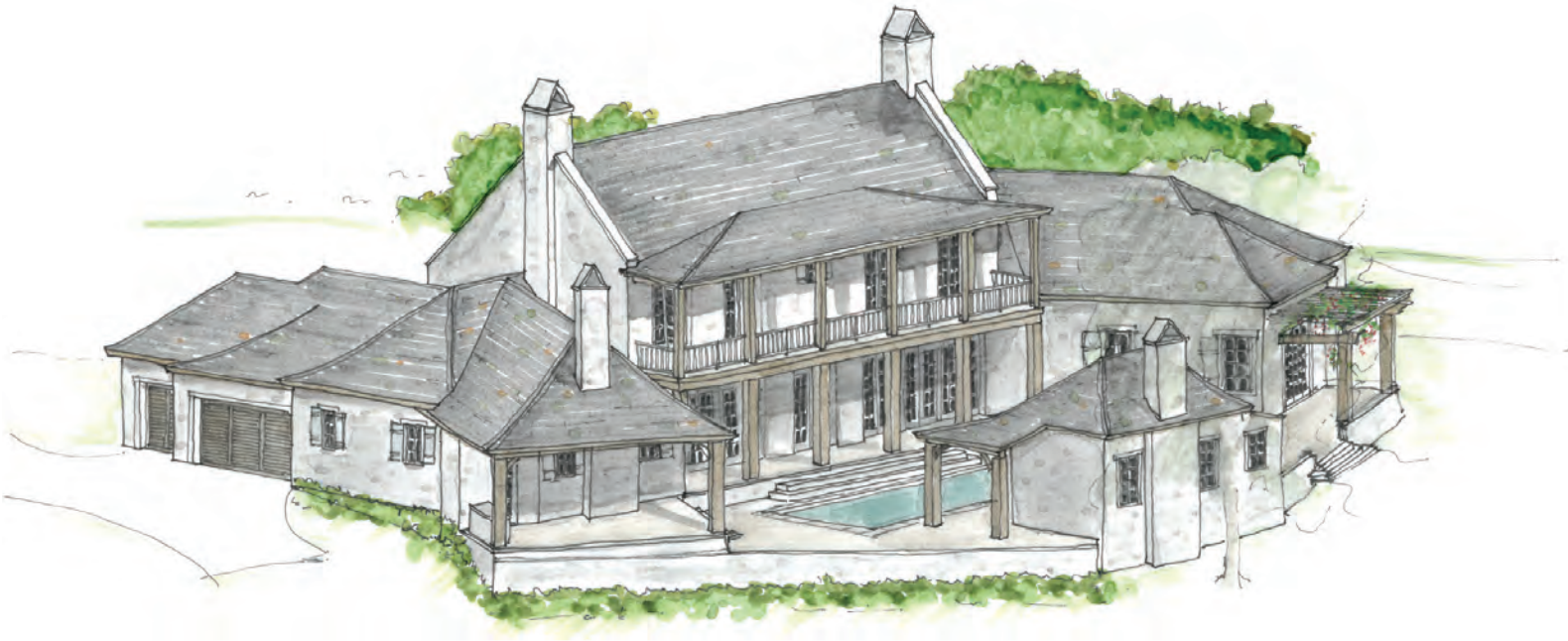
Stuart Beken, a native Texan, leads Metropolitan Custom Homes and its quality team of professionals. They specialize in innovative ways to maximize the homebuyer's investment in their new home.

[MetropolitanCustomHomes.net](http://MetropolitanCustomHomes.net)





## FEATURED HOME:



CONCEPTUAL ISOMETRIC VIEW  
N.T.S.

### CUSTOM HOME MALLARD LANE

5,000 SQ. FT.

4 BEDROOMS | 4.5 BATHROOMS

- Master and guest suites on main level with covered, outdoor spaces attached
- Large gourmet kitchen with Wolf/Subzero appliances
- Synthetic slate roof
- Exposed beams and cedar detail throughout
- Multiple expansive outdoor living areas
- Mosquito System
- Large Safe Room
- Wine room
- Whole home generator
- Heated private pool and hot tub





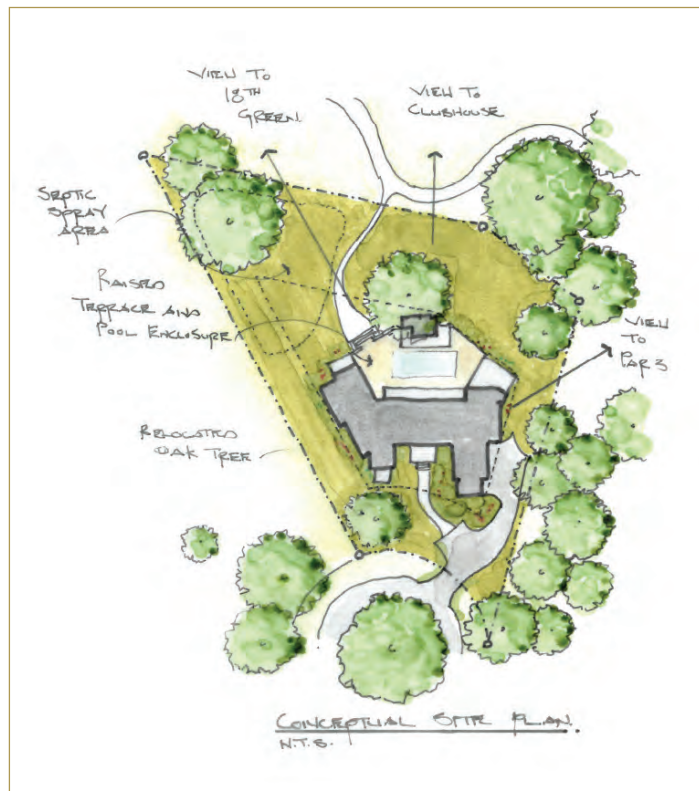
# CUSTOM HOME: MALLARD LANE



5,000 SQ. FT.

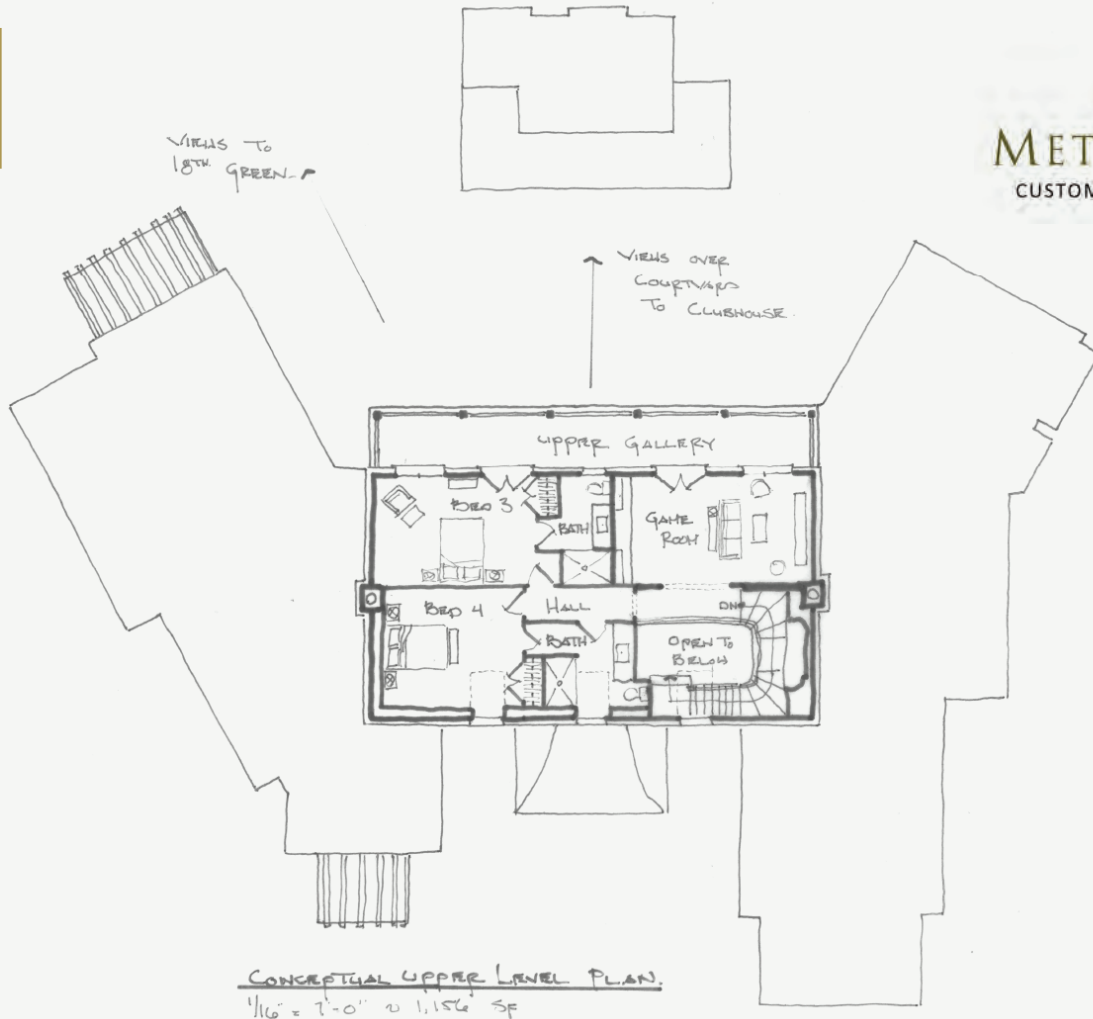
4 BEDROOMS | 4.5 BATHROOMS

- Master and guest suites on main level with covered, outdoor spaces attached
- Large gourmet kitchen with Wolf/Subzero appliances
- Synthetic slate roof
- Exposed beams and cedar detail throughout
- Multiple expansive outdoor living areas
- Mosquito System
- Large Safe Room
- Wine room
- Whole home generator
- Heated private pool and hot tub

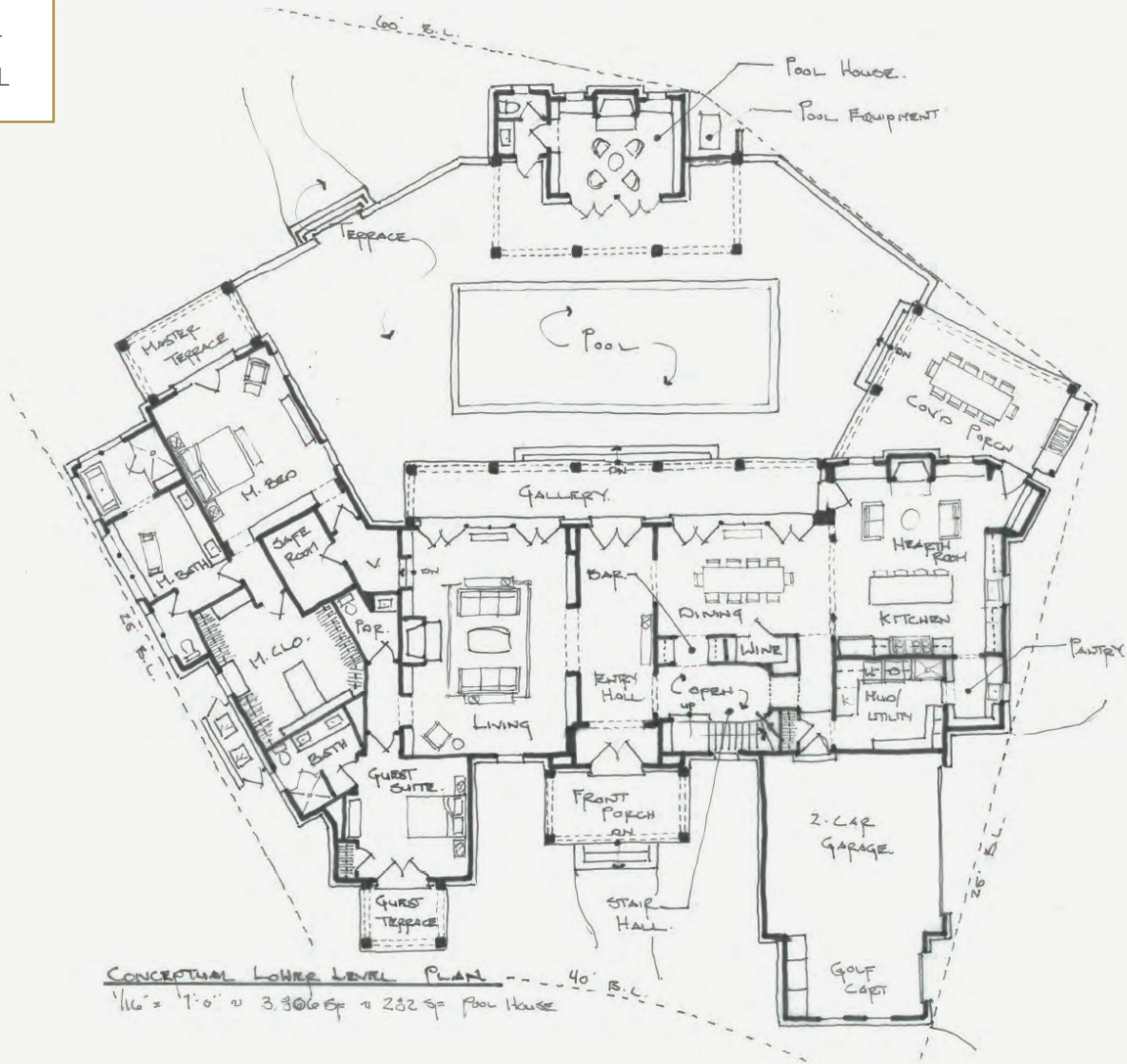




SECOND LEVEL



FIRST LEVEL





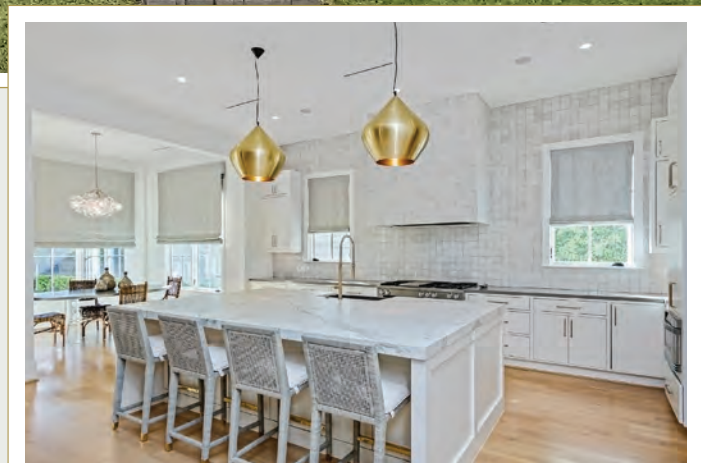


INWOOD by LEITCH PROPERTIES

**LEITCH PROPERTIES** is a premier boutique builder specializing in high-quality luxury homes. Our design department ensures the architecture, function, and visual aspects of the exteriors and interiors are cohesive and enhance the living environment. We work directly with you, or with your designer, throughout the process to ensure a rewarding outcome.

Our mission is to provide efficient and cost-effective solutions to our valued clients. Our primary goal is keeping our customers' best interests in mind from design to completion.

[LeitchProperties.com](https://LeitchProperties.com)





## FEATURED HOME:



1717 BIG EASY RANCH LANE, FRONT ELEVATION

### CUSTOM HOME 1717 BIG EASY RANCH LANE

MAIN HOUSE: 6,310 SQ. FT.  
GUEST QUARTERS: 829 SQ. FT.  
TOTAL: 7,439 SQ. FT.

5 BEDROOMS  
5 FULL BATHS  
2 HALF BATHS



- Media room, playroom, lounge, & office.
- 3-car garage with connected living quarters and separate entrance
- Master suite with lavish amenities including a shower with steam unit, his and her water closets, closets, & sinks.
- Private office provides sweeping 180-degree views.
- Smart Home capabilities with Control4 for all lighting, thermostat, and speakers throughout the home.
- Wolf/SubZero Appliances
- Swimming pool and hot tub
- Three patios and backyard fire pit





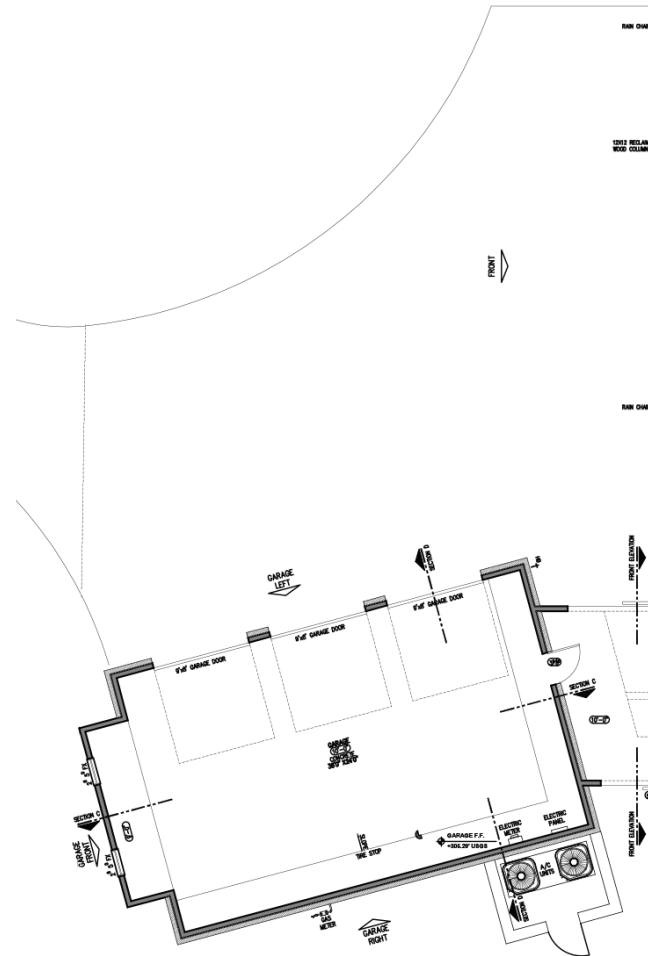
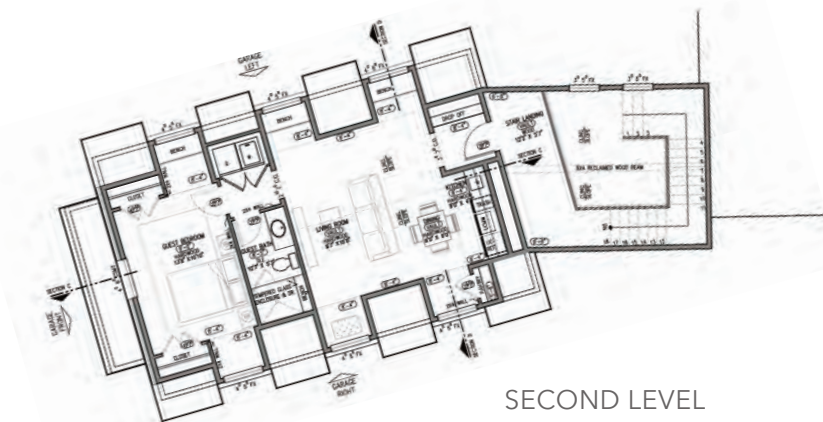


1717 BIG EASY RANCH LANE, BACK ELEVATION

## CUSTOM HOME: 1717 BIG EASY RANCH LANE

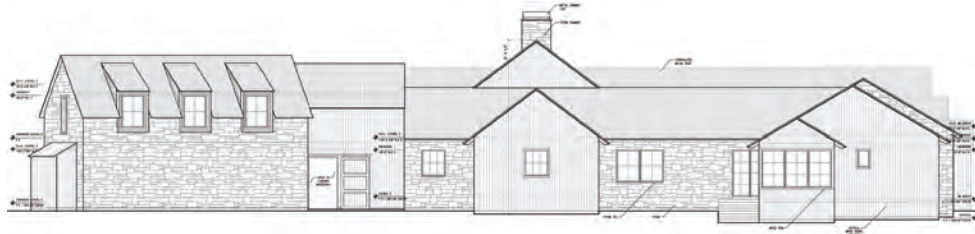
MAIN HOUSE: 6,310 SQ. FT.  
GUEST QUARTERS: 829 SQ. FT.  
TOTAL: 7,439 SQ. FT.

5 BEDROOMS  
5 FULL BATHS | 2 HALF BATHS

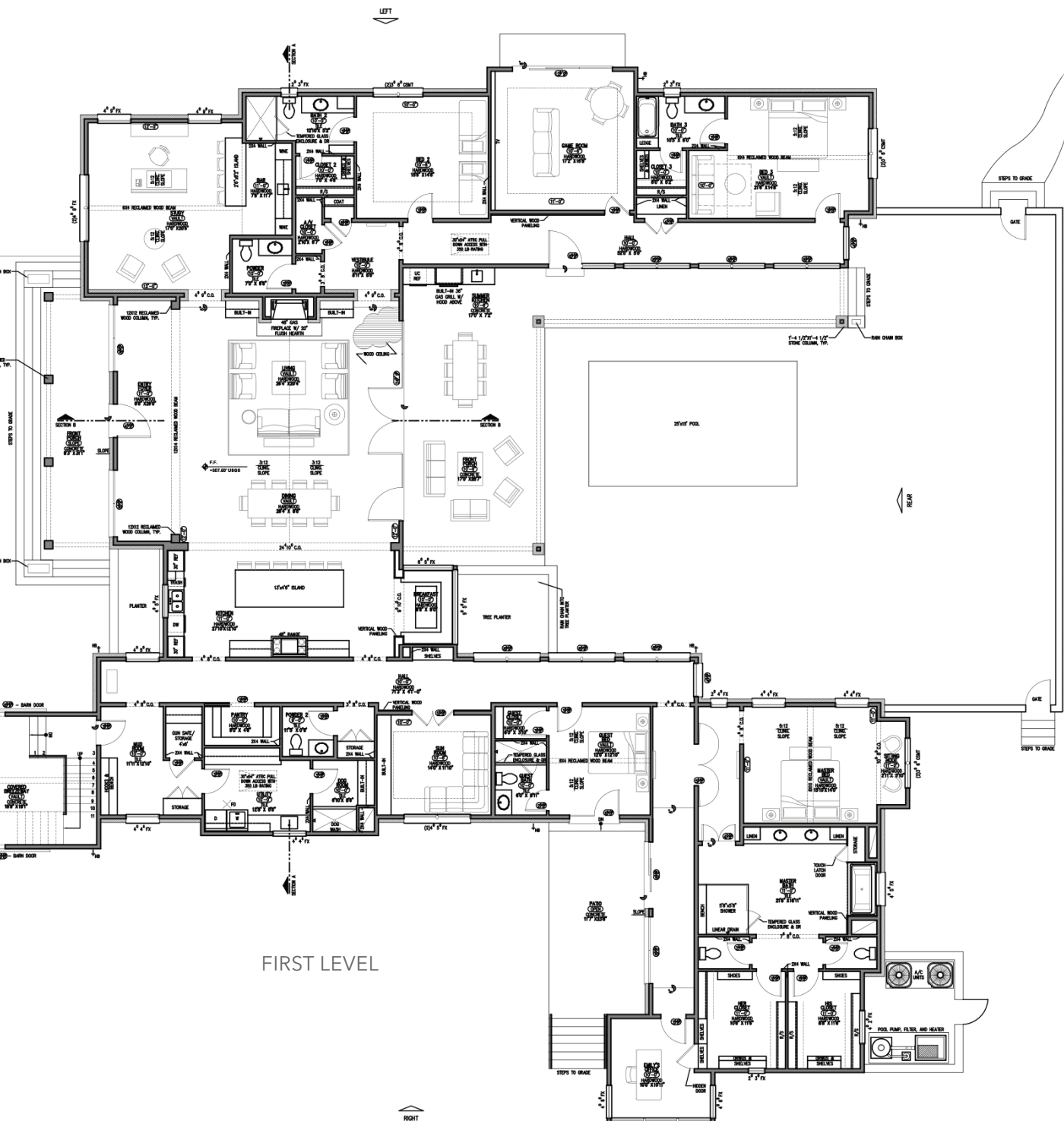
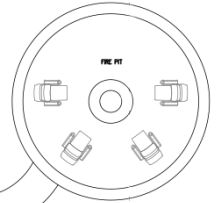




RIGHT ELEVATION



LEFT ELEVATION



FIRST LEVEL





AS AN OWNER, YOU'LL  
ENJOY UNIQUE BENEFITS.

## AMENITIES

### BIG EASY LODGE

The 12,000 SF Lodge is the focal point for relaxation and social gatherings at Big Easy Ranch. The Lodge boasts rustic decor with a stone fireplace, leather club chairs, big screen TVs, billiards, shuffleboard, and spacious outdoor patios with a firepit. Members enjoy a casual fine dining experience, with an award-winning wine cellar and year-round social events.

### SPORTING ACTIVITIES

Enjoy a sporting clay course, 700-yard rifle range, numerous fishing lakes, infinity pool and water activities. Set out from Redfish Lake's sandy beaches and explore by kayak, pedal boats or pontoon.

### BRAG-WORTHY FISHING

Fishing lakes are stocked with trophy largemouth bass, freshwater redfish, hybrid striper and more. Fishing is available by dock, shoreline and kayak with rod or fly rod.

### 18 HOLES & A PERFECT PAR 3

As if the spectacular golf experience at Big Easy Ranch were not enough, The Covey, an 18-hole championship golf course, opened in 2023 to rave reviews. Behind the masterpiece is Chet Williams, renowned course architect who also designed the club's acclaimed nine-hole par 3 golf course. The exceptional topography of The Covey blends seamlessly with its surroundings, embracing the wooded, rolling terrain and rambling creeks of the landscape as it stretches across 7,500 yards of play.

The 80-foot elevation changes, multiple tee boxes, Zeon Zoysia fairways and rough, and TifEagle greens aid in making The Covey one of Texas's most anticipated, so much that the Texas Golf Association set its sights on The Covey for upcoming Texas Mid-Amateur Match Play and 120th Texas Amateur Championships.

Both courses boast dramatic elevation changes and stunning waterfalls for an exceptional and memorable golfing experience.





## MEMBERSHIP

**RANCH MEMBERSHIP** provides unlimited access to the nine-hole par three golf course, golf practice facilities, the sporting clay course, rifle range, fishing lakes, an infinity pool and water activities. Members enjoy a full calendar of golf, hunting and social events.

**LEGACY MEMBERSHIP** includes the many benefits of Ranch Membership along with exclusive access to The Covey 18-hole championship golf course, now open to great acclaim.

Legacy Membership is required for both home ownership and shared ownership. Please note: Membership is by invitation with Member sponsorship and subject to application approval.



### AMENITIES AT A GLANCE:

- Casual Fine Dining
- Award-Winning Wine Cellar
- Luxurious Lodging
- 18-Hole Championship Golf Course, *The Covey*
- Nine-Hole Par 3 Golf Course
- Infinity Pool with Cabana & Bar
- Brown Plaza Amphitheater
- The Eagle's Nest
- Sporting Clay Course
- Rifle & Pistol Range
- Fishing Lakes
- Upland & European Hunting
- Whitetail & Exotic Hunting
- Executive Airports Nearby



THE IDEAL LOCALE FOR SHARED VILLAS & YOUR ESTATE HOME:



# NEW RELEASE HOMESITES

THESE EXCEPTIONAL  
HOMESITES MAXIMIZE  
RANCH LIVING:

APPROXIMATELY 80 ESTATE LOTS  
have been released to accommodate your  
custom ranch home.

ESTATE HOMESITES RANGE FROM  
2/3 ACRE TO OVER ONE ACRE.

DIVERSE & BEAUTIFUL NATIVE  
TERRAIN offers varying breathtaking views  
of lakes, creeks, wooded areas and the 9-hole  
golf course.

SELECT HOME BUILDERS  
MAXIMIZE VIEWS and the overall Big  
Easy Ranch living experience will design and  
build your dream home through exceptional  
design and construction.



## MASTER PLAN

 ESTATE HOMESITES &  
SHARED OWNERSHIP VILLAS

-  GATED ENTRANCE
-  FUTURE GOLF CLUBHOUSE
-  GOLF ACADEMY
-  LODGE & CLUBHOUSE
-  EAGLE'S NEST TOWER
-  UPLAND BIRD FIELD, 2 OF 10

WE CAN HELP YOU BEGIN YOUR ESTATE OR VILLA ADVENTURE AT **BIG EASY RANCH.**



NEW RELEASE  
HOMESITES







## THIS IS AN UNPRECEDENTED OPPORTUNITY

TO EMBRACE LUXURY RANCH LIVING.

For those who seek a vibrant lifestyle among spectacular rolling hills, lakes and inspiring hill country architecture, Big Easy Ranch awaits.

With an extremely limited number of Shared Ownership Villas and Estate Homesites available, the time to embark on your Big Easy Ranch adventure is now.

CONTACT US TO LEARN MORE ABOUT:

- SHARED OWNERSHIP VILLAS
- ESTATE HOMESITES
- SELECTED BUILDERS PROGRAM
- AVAILABLE FLOORPLANS + ELEVATIONS & INSPIRATION

ENVISION YOUR HOME & SEIZE THE MOMENT.

*we'll make it* **EASY.**





WELCOME TO  
**BIG EASY**  
*Living*

LET'S TALK ABOUT CREATING YOUR NEW HOME  
AT **BIG EASY RANCH.**

**STEVE BENOIT**

Director of Real Estate  
Big Easy Real Estate Company LLC

(979) 733-8635 MAIN LINE

(281) 435-9009 CELL PHONE

[stevenb@bigeasyranch.com](mailto:stevenb@bigeasyranch.com)



COME & EXPLORE



**BIG EASY**  
*Living*

*at* **BIG EASY RANCH**

LUXURY GATED LIVING, RANCH-STYLE. OFFERING PREMIUM ESTATE HOMESITES  
& SHARED OWNERSHIP FROM THE MID-\$800'S.



[BIGEASYPUBLIC.COM](http://BIGEASYPUBLIC.COM) 979-733-8635 2400 BRUNES MILL RD, COLUMBUS, TX

Obtain the Property Report required by Federal law and read it before signing anything. No Federal agency has judged the merits or value, if any, of this property. Void where prohibited by law. This product does not constitute an offer to sell real property in any jurisdiction where prior registration or advanced qualification is required but not completed. © Big Easy Ranch

\*The material and images listed in this digital brochure are current as of the date produced and are for informational and illustrative purposes only. Images shown are for illustration purposes only and may not be an exact representation of the product. Please contact Big Easy Ranch for more information and questions.